

WOODROW WILSON ELEMENTARY SCHOOL

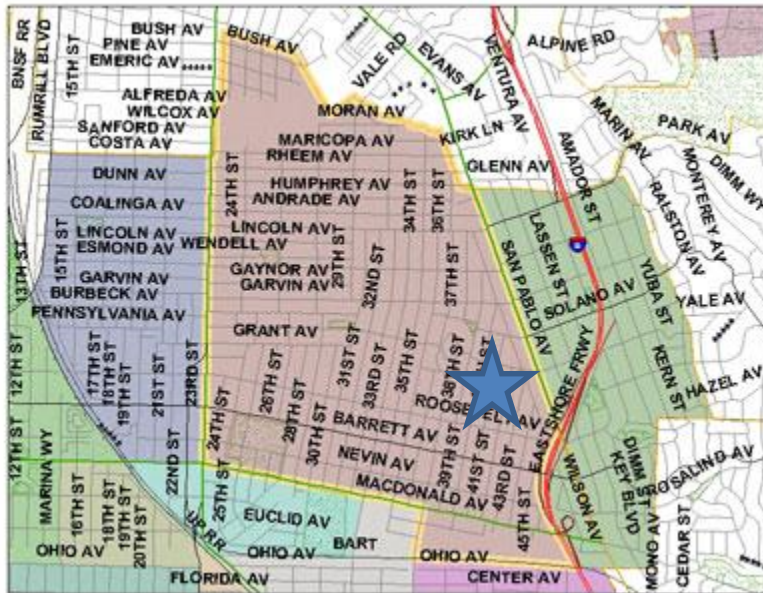
CONCEPTUAL DESIGN & MASTERPLAN

WEST CONTRA COSTA UNIFIED SCHOOL DISTRICT

FACILITIES SUBCOMMITTEE PRESENTATION

OCTOBER 11, 2011

INTERACTIVE
R E S O U R C E S
Architects & Engineers



LOCATION & NEIGHBORHOOD

27 total CR's
Including 4 k,
1 pre-K

Summary of Capacity, Enrollment & Classrooms		Including 4 k, 1 pre-K				Projected Enrollment: 611							Site Acres: 4.5						
Woodrow Wilson Elementary School		MINIMUM REQUIRED			EXISTING							PROPOSED							
Description of Classrooms/Rooms		Square Footage Required	AM/FM	No. of CR/IRM	Square Footage Existing	No. of CR/IRM	District Load Factor	Capacity per District Loading	OP/SC Load Factor	Capacity per State	No. CR Req. Per State	Square Footage Proposed	No. of CR/IRM	District Load Factor	Capacity per District Loading	OP/SC Load Factor	Capacity per State	No. CR Req. Per State	
KINDERGARTEN	Kindergarten (Incl. (2) Restrooms, Int & Ext Storage & Prep. Area)	1,465	2	2	1,160	2	20	40	25	100	2	1,465	4	24	96	25	200	4	
CLASSROOMS	Classroom 1 grades	960			921	5	18	90	25	125	4	960	5	20	100	25	125	4	
	Classroom 2nd grades	960			921	5	18	90	25			960	5	20	100				
	Classroom 3rd grades	960			921	3	24.5	73.5				960	4	28	112				
	Classroom 4-6 grades	960			960	7	29.4	205.8	25	175	9	960	9	33	297	25	225	12	
	Classroom: used by outside program not shown below				y-care CBO														
	Classroom: other use Site/District not shown below				y-care CBO														
	Subtotal	19,300		2	13,645	22					15	27,940	27					20	
Subtotal Enrollment									499.3	400				705		550			
CORE FACILITY																			
ADMINISTRATION	Administration Lobby	200		1	25	1						1000	1						
	Secretary/Receptionist	350		1	85	1						350	1						
	Principal's Office	140		1	45	1						150	1						
	Project Assistant	100		1 na	1							100	1						
	Multi-use Office(Curriculum Guide/Teacher's Aid/etc)	100		1 na	1							100	1						
	Conference Room	250		1 na	0							250	1						
	Community/Parent Room/storage	960		1	0							917	1						
	Teachers' Lounge	960		1	119	1						980	1						
	Teachers' Workroom	500		1 na	1							664	1						
	Nurse	120		1	86	1						140	1						
	Nurse's Restroom	64		1 na	0							80	1						
	Book/Supply Room	120		1	42	1						311	1						
	Psychologist Office	100		1	53	1						118	1						

Summary of Capacity

WOODROW WILSON ELEMENTARY SCHOOL
WEST CONTRA COSTA UNIFIED SCHOOL DISTRICT

September 16, 2011

MEDIA CENTER +	Speech Therapy	200	1	dbl use-closet	1							200	1						
	Records/Safe Room	80	1		0							80	1						
	Subtotal	4,244	15	455	11							5440	15						
	Library/Media Center @approx. 3sf/pupil not less than 1200 sf min.	2,250	1	209	1							1400	1						
	Audio/Visual Room	100	1	na	1							100	1						
	Computer Lab (library)	960	0	215	0							715	1						
	Library/Media Center Work Room	120	1	na	1							100	1						
	Subtotal	3,430	3	424	3							2315	4						
	Multi-Purpose Room @____sf/pupil typical ES @ 3,500	3,500	1	624	1							4227	1						
	Kitchen including Community Kitchen Facilities	1,400	1	60	1							1412	1						
MULTI-PURPOSE	Speedline				1							300	1						
	Kitchen Dry Storage	80	1	25	1							80	1						
	Changing room				1							80	1						
	Office											80	1						
	Kitchen Staff Restroom	80	1	na	1							80	1						
	Stage	1,200	1	192	1							1200	1						
	Table / Chair Storage			under stage	1							250	1						
	Men public restroom			37	1							180	1						
	Women public restroom			37	1							220	1						
	Stage Storage	200	1		1							200	1						
ADDITIONAL SUPPORTS	Subtotal	6,460	6	975	11							8309	12						
	Computer Lab (includes prep area)	960	1		1					25	25	0	960	2			25	50	0
	Multi-Use classroom (Science, Art & Music)--include dedicated zone for Special Site program--Elem Sci, Cooking Prog. --by site.	1,200	1		1	0	0	25	25	0		1200	2	0	0	25	50	0	
	Subtotal	2,160	2	10	2	0	0	50	0			4320	4	0		100	0		
	1-3 Girls' Gang Restroom(s)	200	1	108 total	2							250	2						
	1-3 Boys' Gang Restroom(s)	150	1	110 total	2							250	2						
	4-6 Girls' Gang Restroom(s)	200	1	na	1							250	1						
	4-6 Boys' Gang Restroom(s)	150	1	na	1							250	1						
MAINTENANCE/ SUPPORTS																			

Summary of Capacity

WOODROW WILSON ELEMENTARY SCHOOL WEST CONTRA COSTA UNIFIED SCHOOL DISTRICT

September 16, 2011

	Staff Women Restroom(s)	65	1	20	1						65	2				
	Staff Men Restroom(s)	65	1	14	1						65	2				
	Custodial Closet	50	2	65 total	3						50	2				
	Central Electrical room	120	1	?	1						120	1				
	Telephone / Auxiliary room	150	1	?							150	1				
	Custodial Storage room	200	1	40	1						200	1				
	Satelite Electrical	50	1	?	0						50	1				
	Storage	100	1	48	1						100	2				
	EarthquakeSupply Container (outside building footprint)	0	1													
	Subtotal	1,500		122							1800	18				
	Total	37,094		15,631				499.3		450	50,124		705		650	
SPECIAL FACILITIES																
	Description of Classrooms/Rooms	Square Footage	Double Session	No. of RM	No. of Room	District Load Factor	Capacity per District Loading State	Capacity per State	No. CR Req. Per State	No. of Room	District Load Factor	Capacity per District Loading State	Capacity per State	No. CR Req. Per State		
PRE-SCHOOL	Preschool classroom(s) (Incudes (2) Restrooms, Storage & Prep Area)	1,350		1 (prtbls)	1am/pm	0	0	0	0	0	0	0	0	0		
SPECIAL ED	Preschool SH classroom(s) (Incudes (2) Restrooms, Storage & Prep Area)	1450*		0** na	0	0	0	0	0	0	0	0	0	0	####	
	Primary SH classroom(s) (Incudes (2) Restrooms, Storage & Prep Area)	1450*		0** 209	1	0	0	0	0	960	1	0	0	0	0	
	Upper Grade SH classroom(s) (Incudes (2) Restrooms, Storage & Prep Area)	1450*		0** na	0	0	0	0	0	0	0	0	0	0	0	
	Pre-school - teachers workroom	200														
	**For District SH sites min. req'd is 1 Pre-school, 1-Primary, 1-Upper Grade. Example: Castro. Confirm w/District--existing conditions should note.															
	*Program space to include Washer/Dryer, Stove, Sink, Refrig for Life Skills. See full program.															
SPECIAL EDUCATION	Special Day Classroom: NSH or TEP. (Transitional Ed. Program--Requires Time Out Room 80 sf min.)	960		0	209	1	0	0	0	960	2	0	0	0	0	
	Learning Center (RSP Program)	960		0	209	1	0	0	0	960	1	0	0	0	0	

Summary of Capacity

WOODROW WILSON ELEMENTARY SCHOOL WEST CONTRA COSTA UNIFIED SCHOOL DISTRICT

	Hearing Impaired Classroom(s)	960	0		0	0	0	0	0	0	0	0	0	0	0	0	0
	Occupational Therapy Room (aka Motor Room)	960	0	(in library)	1	0	0	0	0	0	0	0	0	0	0	0	0
ADDITIONAL ADMINISTR.	Principal's Restroom	64	0		0	0	0					0	0	0			
	Vice Principal Office	120	0		0	0	0					0	0	0			
	Counseling	100	0		0	0	0					0	0	0			
	Student Improvement	100	0		0	0	0					0	0	0			
	Community Services	1,000	0		0	0	0				2537	1	0	0			
	Storage Room	450	0		0	0	0					0	0	0			
		100	0		0	0	0					0	0	0			
ADDED PROGRAM	Copier			0	0	0	0						0				
	Small Group			0	0	0	0						0				
	Public Restroom at Admin Area			0	0	0	0					1	0				
	Subtotal	1,920	1	627	4		0		0		6377	7		0		0	
	Total	39014		16258			499.3				56501			705			
	Circulation, Data Rms, Electrical Rms, Elev. = (33)% or as determined—lower—by individual site conditions.	12,875		15,526							16,950						
	Grand Total	51,889		31,784			499.3		0		73,451			705		0	

NOTES:

1. The old CDE State planning program allowed 62 sf/student 421 x 62 = 25,978 sf max
2. The current SB50 Grant Program does not mandate square footages
3. Title 5, California Code of Regulations defines minimum square foot standards for certain areas only
4. California Education Code Section 1859.83 defines minimum and maximum square foot standards for certain areas only

73,451 total SF

Summary of Capacity
WOODROW WILSON ELEMENTARY SCHOOL
WEST CONTRA COSTA UNIFIED SCHOOL DISTRICT



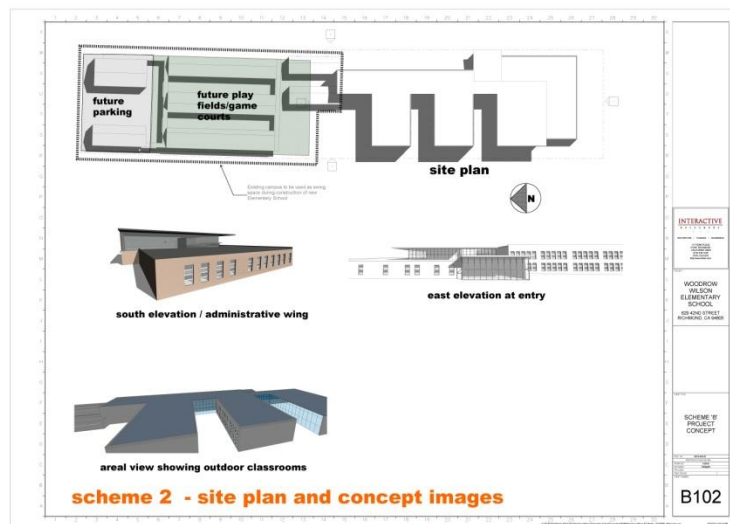
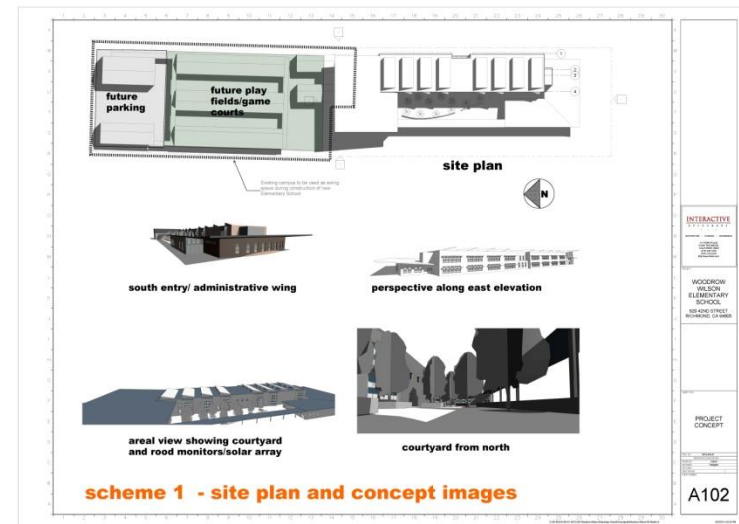
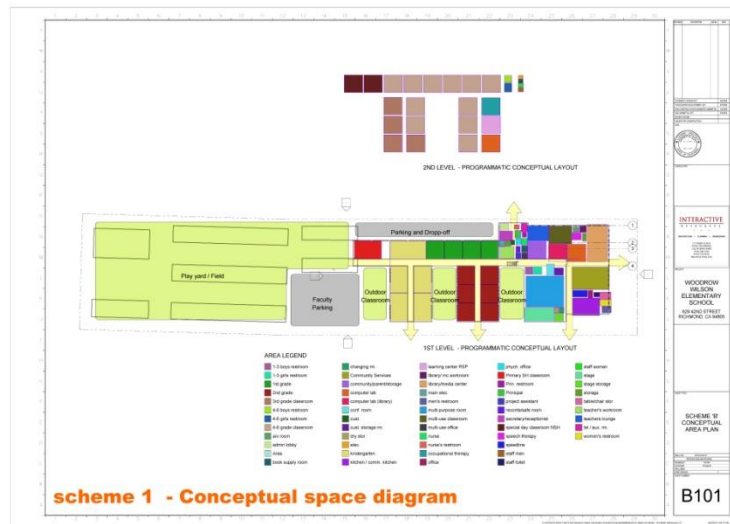
ORIGINAL WILSON SCHOOL - 1947



EXISTING SCHOOL BUILT 1953

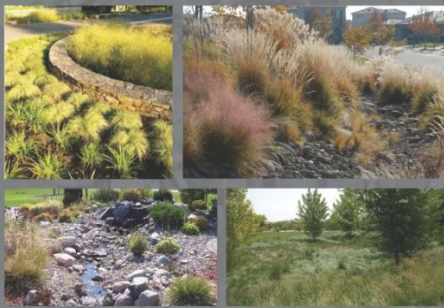


OLD SCHOOL DEMOLISHED - 1954

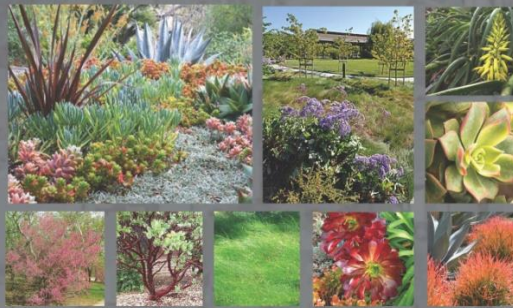


CONCEPT DEVELOPMENT

RAIN GARDENS / BIOFILTRATION



DROUGHT TOLERANT NATIVE PLANTS



RECREATION



LANDSCAPE DESIGN NARRATIVE

The overall goal is to create a secure, accessible, welcoming and sustainable, educational landscape that requires little maintenance and supports the school's educational diversity and develop a safe place for learning.

Public arrival via 41st St. serves as a one-way drop-off. The main entry connects to visitor public parking along the west side, secured staff parking along the 42nd St. entry and Kinder parking by the Kinder Care area.

The 41st St. entry plaza accommodates two flanking court yards with drought-tolerant garden, a student waiting area, a flagpole and outdoor teaching areas to support goals: to be responsible, respectful, and safe. The shaded walking area protects the students.

Outdoor teaching areas that are habitat-enriched for frogs, butterflies and hummingbirds are also biofilter for storm run-off and create another connection to the natural world.

The outdoor play areas include learning opportunities about math, science, geography, and theater. An outdoor 1/2 mile, 3-lane running track and measured runs surround a turf play field for soccer and other games. In order to minimize reflective heat gain, the asphalt is colored to create a cooling effect. A turf play area that is a part of the irrigation and stormwater management system, age-appropriate play structures with play mats play surfacing are provided in the main play yard. The wall fence system along 41st St. provides safety and controlled visibility and access creating a safe, pleasant learning environment.



HABITAT / POETRY GARDENS



ART GARDEN/ OUTDOOR CLASSROOM



SUSTAINABLE ELEMENTS



PAVING

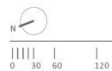


LANDSCAPE IMAGERY
WOODROW WILSON ELEMENTARY SCHOOL

CARDUCCI & ASSOCIATES, INC 02.25.2011

LANDSCAPE CONCEPT DESIGN

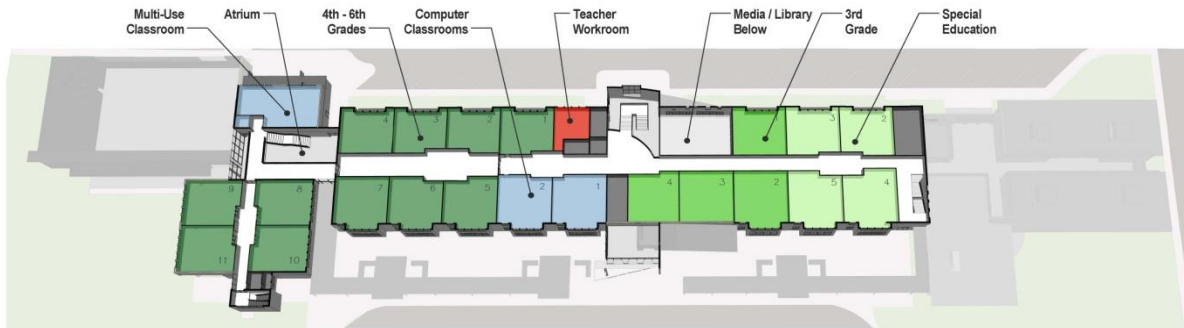
INTERACTIVE
RESOURCES
Architects & Engineers



LANDSCAPE SITE PLAN
WOODROW WILSON ELEMENTARY SCHOOL
CARDUCCI & ASSOCIATES, INC 02.25.2011

LANDSCAPE CONCEPT DESIGN

INTERACTIVE
RESOURCES
Architects & Engineers



UPPER LEVEL



LOWER LEVEL



FROM S.E.



FROM N.E.

WOODROW WILSON ELEMENTARY SCHOOL CONCEPTUAL FLOOR PLANS

February 28, 2011



FROM N.W.



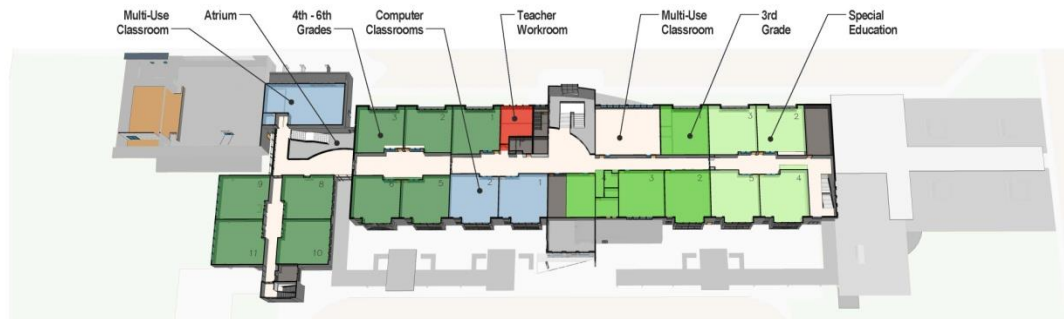
FROM S.W.

WWES



INITIAL MASTERPLAN - 800 STUDENTS

INTERACTIVE
RESOURCES
Architects & Engineers



UPPER LEVEL



LOWER LEVEL

FROM N.W.



FROM S.W.



FROM S.E.



FROM N.E.

WOODROW WILSON ELEMENTARY SCHOOL CONCEPTUAL FLOOR PLANS

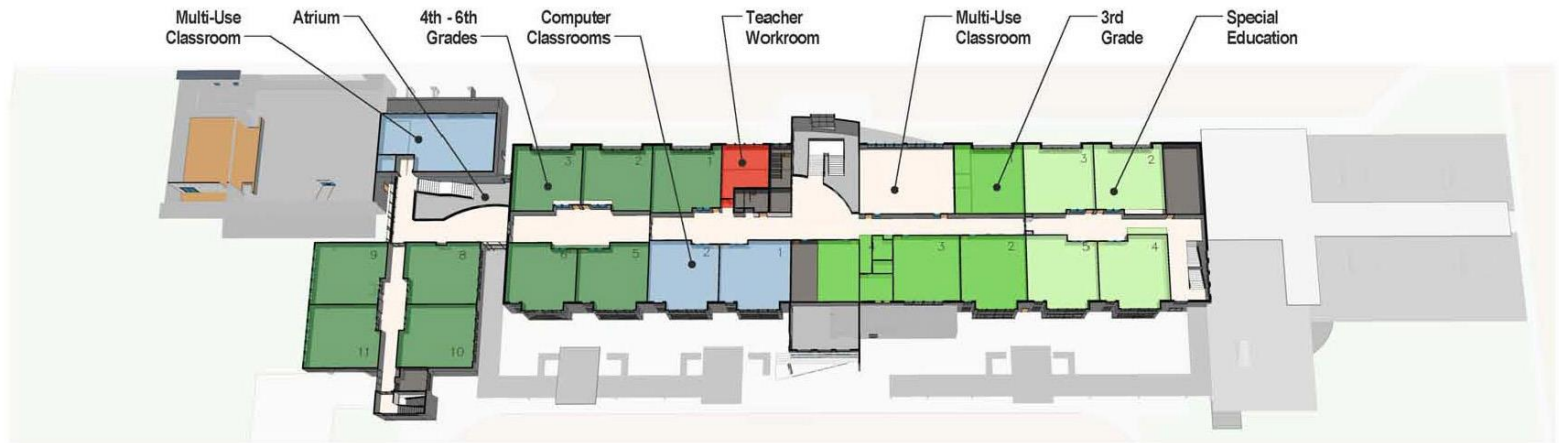
JUNE 6, 2011

Woodrow Wilson Elementary School



FINAL MASTERPLAN - 611 STUDENTS

INTERACTIVE
RESOURCES
Architects & Engineers



UPPER LEVEL



LOWER LEVEL



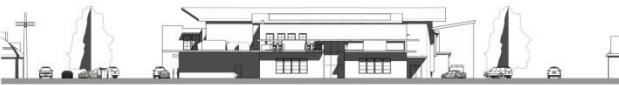
FLOOR PLANS



WEST ELEVATION



EAST ELEVATION



SOUTH ELEVATION



NORTH ELEVATION



View from Southwest
Sundown, Summer Equinox

WOODROW WILSON ELEMENTARY SCHOOL

800-Student Elementary School
41st Street and Roosevelt Avenue
Richmond, California

The West Contra Costa Unified School District

CONCEPTUAL DESIGN

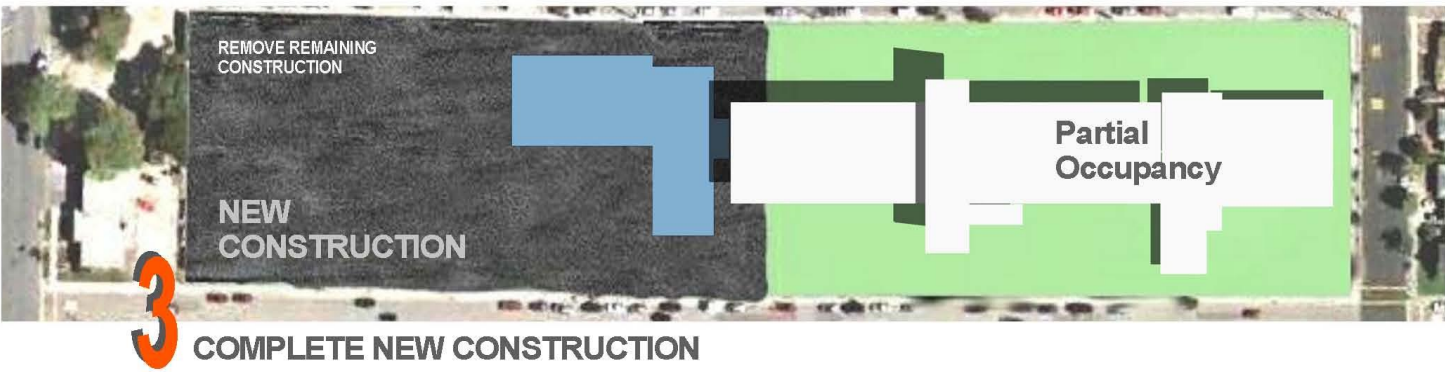
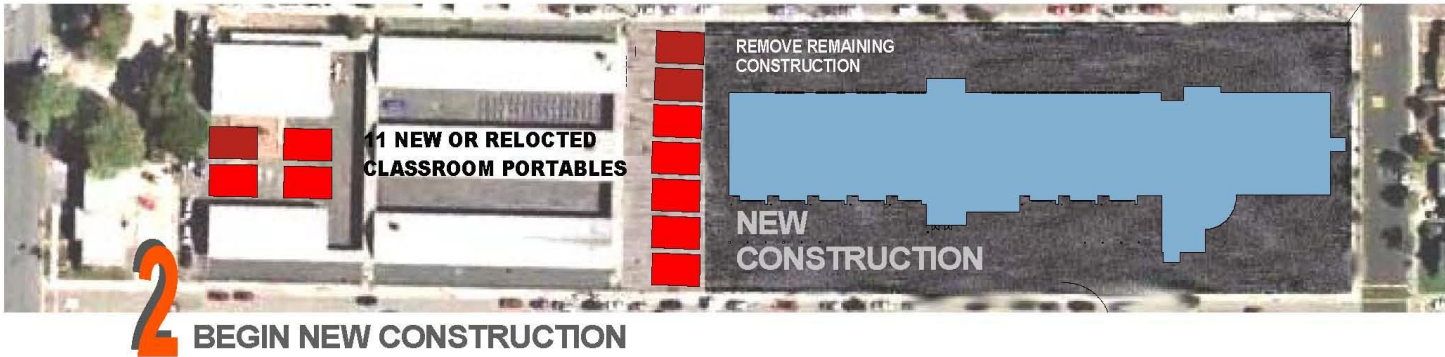
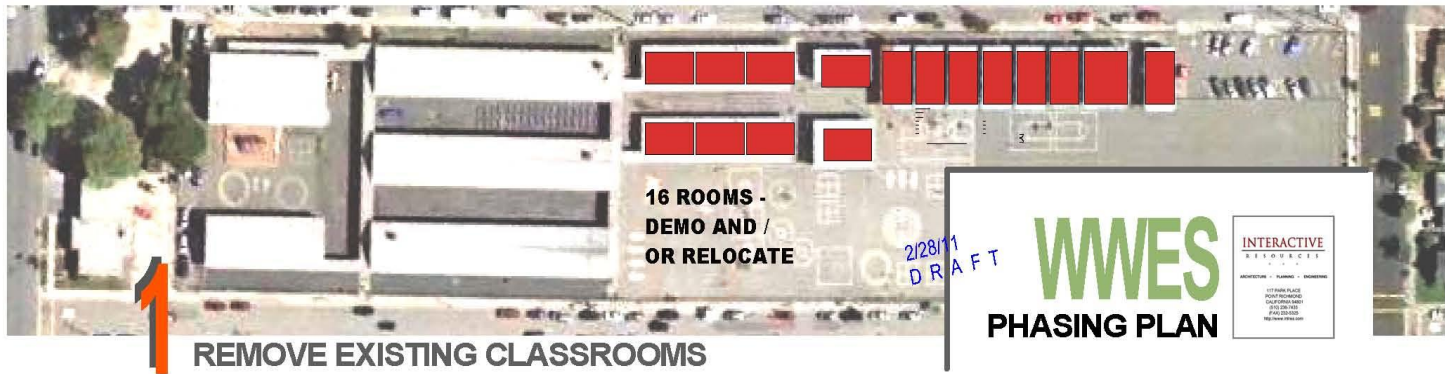
February 28, 2011

WWES



ELEVATIONS AND BIRD'S EYE VIEW

**INTERACTIVE
RESOURCES**
Architects & Engineers



CONCEPTUAL PHASING PLAN



POTENTIAL PLAY YARD