

- 1 DATA & POWER RECEPTACLE IN FLOOR BOX
- 2 DUPLEX POWER RECEPTACLE
- 3 FOURPLEX POWER RECEPTACLE
- 4 INTERCOM SYSTEM CLOCK/ SPEAKER UNIT
- 5 INTERCOM EMERGENCY CALL BUTTON
- 6 AUDIO/ VISUAL OUTLET BOX CONTROL UNIT
- 7 DATA OUTLET
- 8 CLASSROOM SPEAKER - CEILING MOUNT
- 9 POWER/ DATA/ PROJECTOR OUTLETS AND CONTROL BOX IN CEILING
- 10 LIGHTING CONTROL - TEACHER CONTROL STATION
- 11 LIGHTING CONTROL - MAIN SWITCH BANK
- 12 OCCUPANCY SENSOR
- 13 DAYLIGHT DIMMING SENSOR
- 14 FIRE ALARM SMOKE DETECTOR
- 15 FIRE ALARM MINI HORN/ STROBE
- 16 CEILING AIR SUPPLY DIFFUSER
- 17 THERMO STAT
- 18 CEILING AIR RELIEF DIFFUSER

## TYPICAL CLASSROOM KEYNOTES

1:1

SHEET NUMBER:

1.0

PROJECT NUMBER:

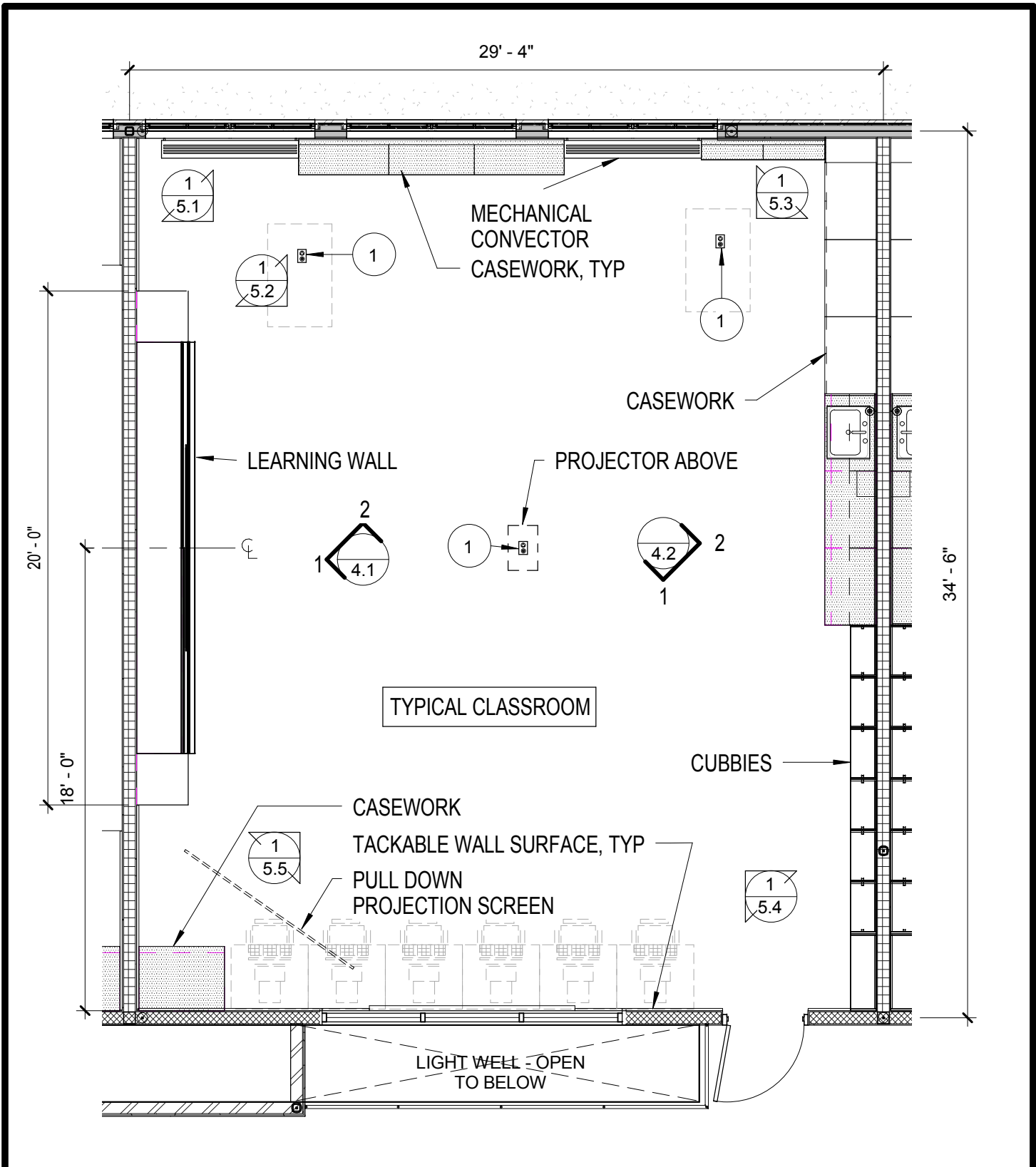
0918201

**WLC Architects, Inc.**

REVISION DATE:

07/13/11





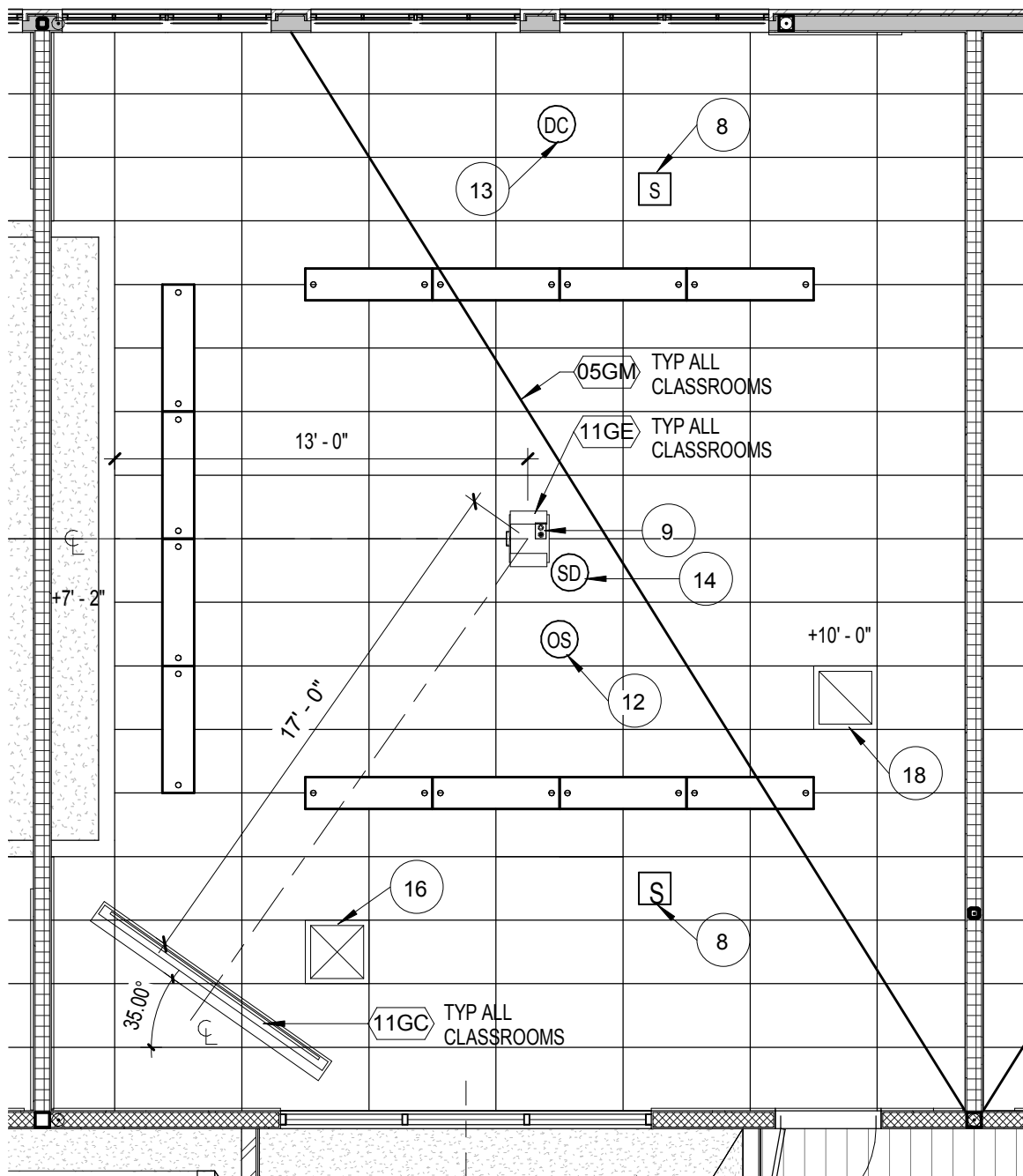
# TYPICAL CLASSROOM PLAN

3/16" = 1'-0"

1

SHEET NUMBER:	2.0	PROJECT NUMBER:	0918201
<b>WLC Architects, Inc.</b>		REVISION DATE:	07/13/11





.KEYNOTE LEGEND.	
KEYNOTE	DESCRIPTION
05GM	CLASSROOM SUPPORT CABLE, CENTER OF CABLE 7'-4" AFF. REF DETAIL
11GC	PROJECTION SCREEN MANUAL OPERATED, RECESS CEILING MOUNTED, SIZE 54"x96", SEE 18/10.2
11GE	CEILING MOUNT PROJECTOR

# TYPICAL CLASSROOM REFLECTED CEILING PLAN

3/16" = 1'-0"

1

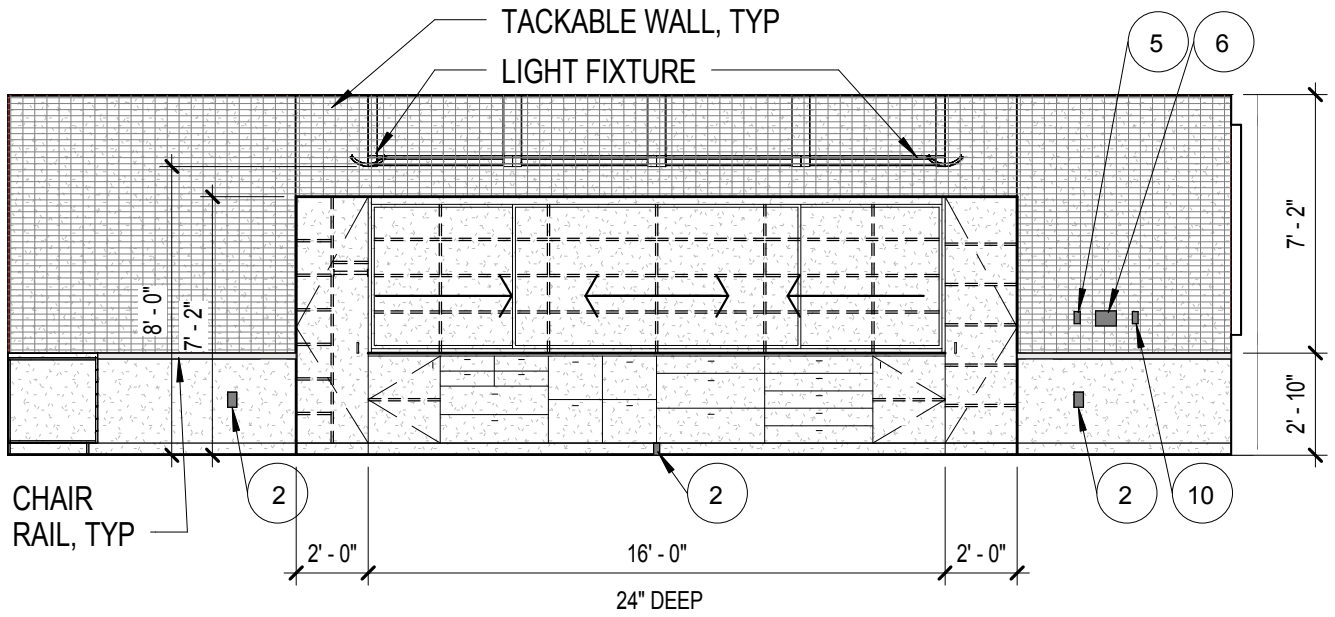
SHEET NUMBER: 3.0

PROJECT NUMBER: 0918201

WLC Architects, Inc.

REVISION DATE: 07/13/11

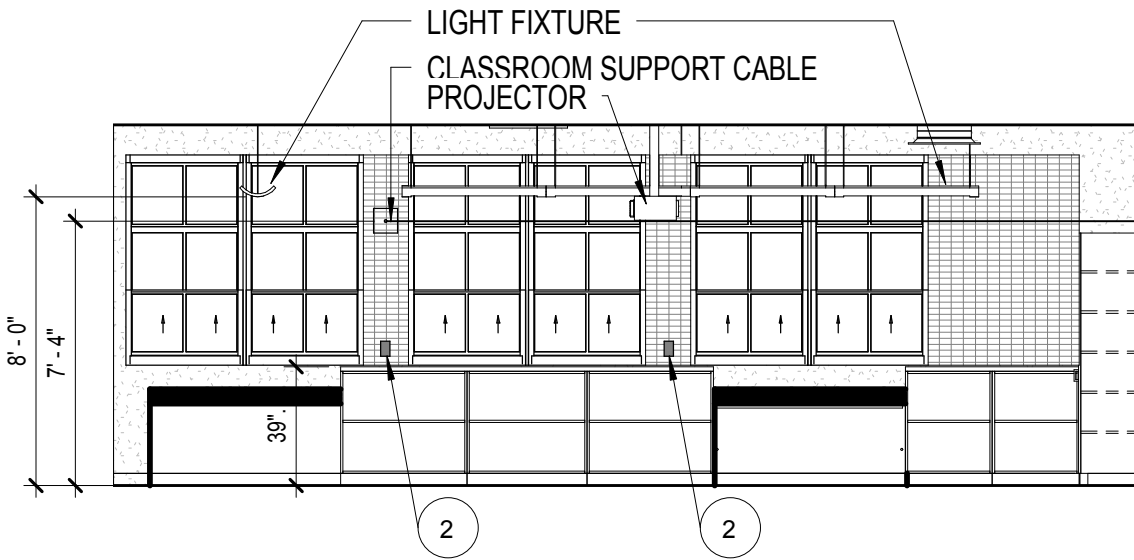




# INTERIOR ELEVATION

3/16" = 1'-0"

1



# INTERIOR ELEVATION

3/16" = 1'-0"

2

SHEET NUMBER:

4.1

PROJECT NUMBER:

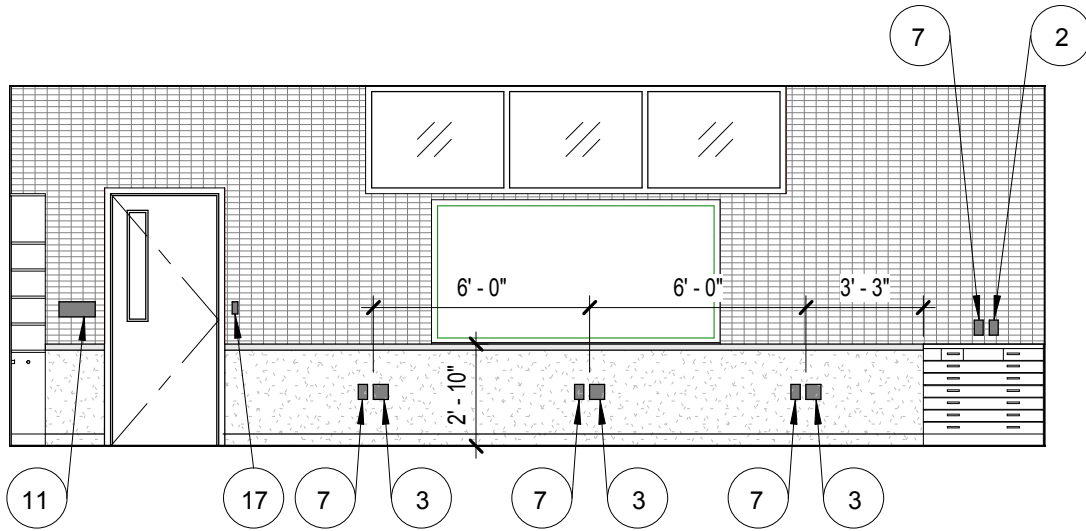
0918201

WLC Architects, Inc.

REVISION DATE:

07/13/11

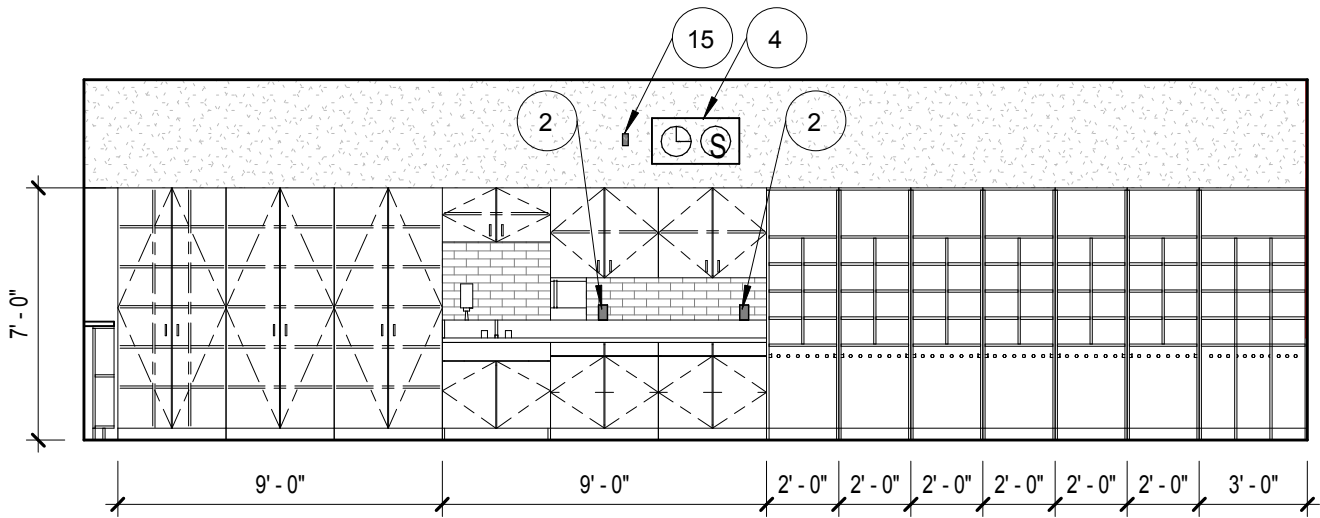




INTERIOR ELEVATION

3/16" = 1'-0"

1



INTERIOR ELEVATION

3/16" = 1'-0"

2

SHEET NUMBER:	4.2	PROJECT NUMBER:	0918201
<b>WLC Architects, Inc.</b>		REVISION DATE:	07/13/11





TYPICAL CLASSROOM PERSPECTIVE

1

SHEET NUMBER:

5.1.

PROJECT NUMBER:

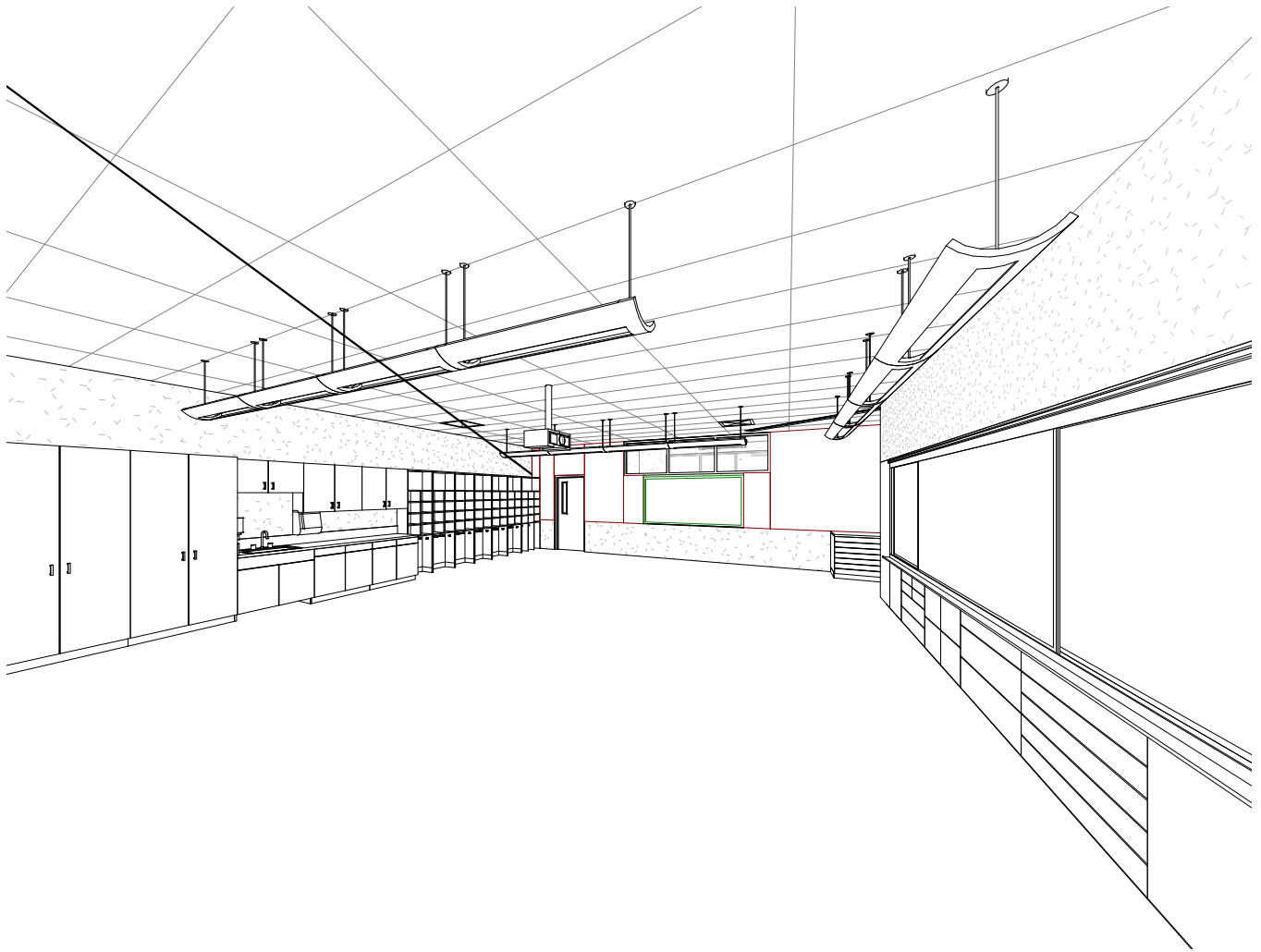
0918201

**WLC Architects, Inc.**

REVISION DATE:

07/13/11





# TYPICAL CLASSROOM PERSPECTIVE

1

SHEET NUMBER:

5.2.

PROJECT NUMBER:

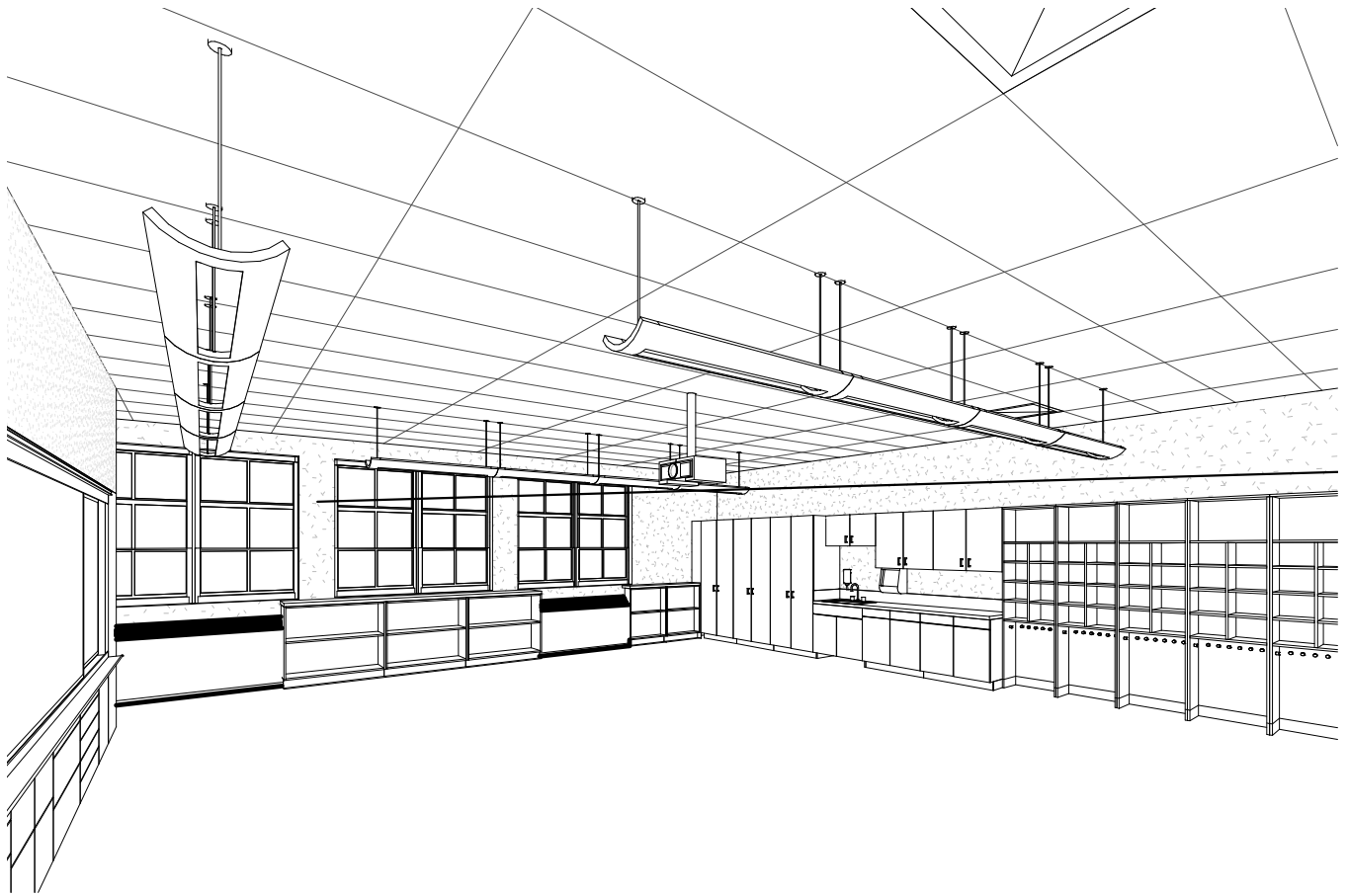
0918201

**WLC Architects, Inc.**

REVISION DATE:

07/13/11





# TYPICAL CLASSROOM PERSPECTIVE

1

SHEET NUMBER:

5.5.

PROJECT NUMBER:

0918201

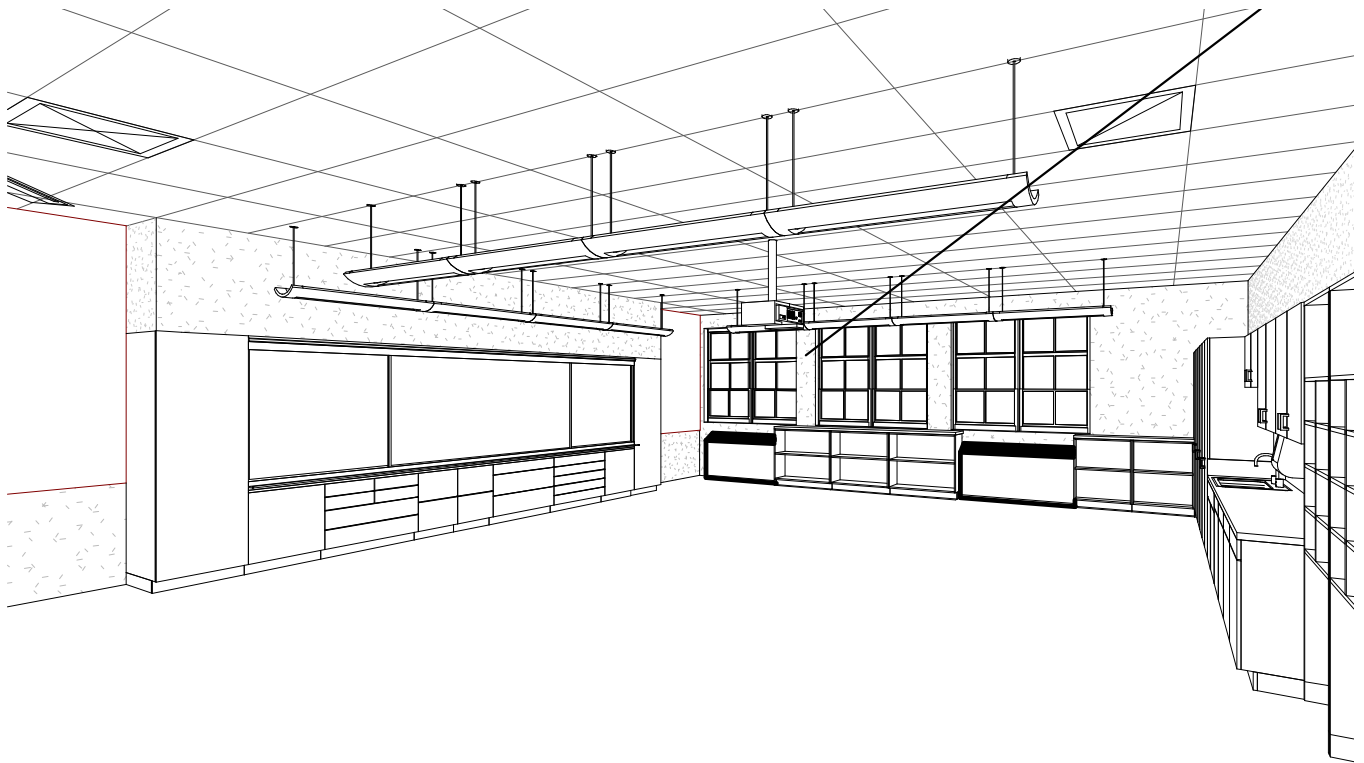
**WLC Architects, Inc.**

REVISION DATE:

07/13/11







# TYPICAL CLASSROOM PERSPECTIVE

1

SHEET NUMBER:

5.4.

PROJECT NUMBER:

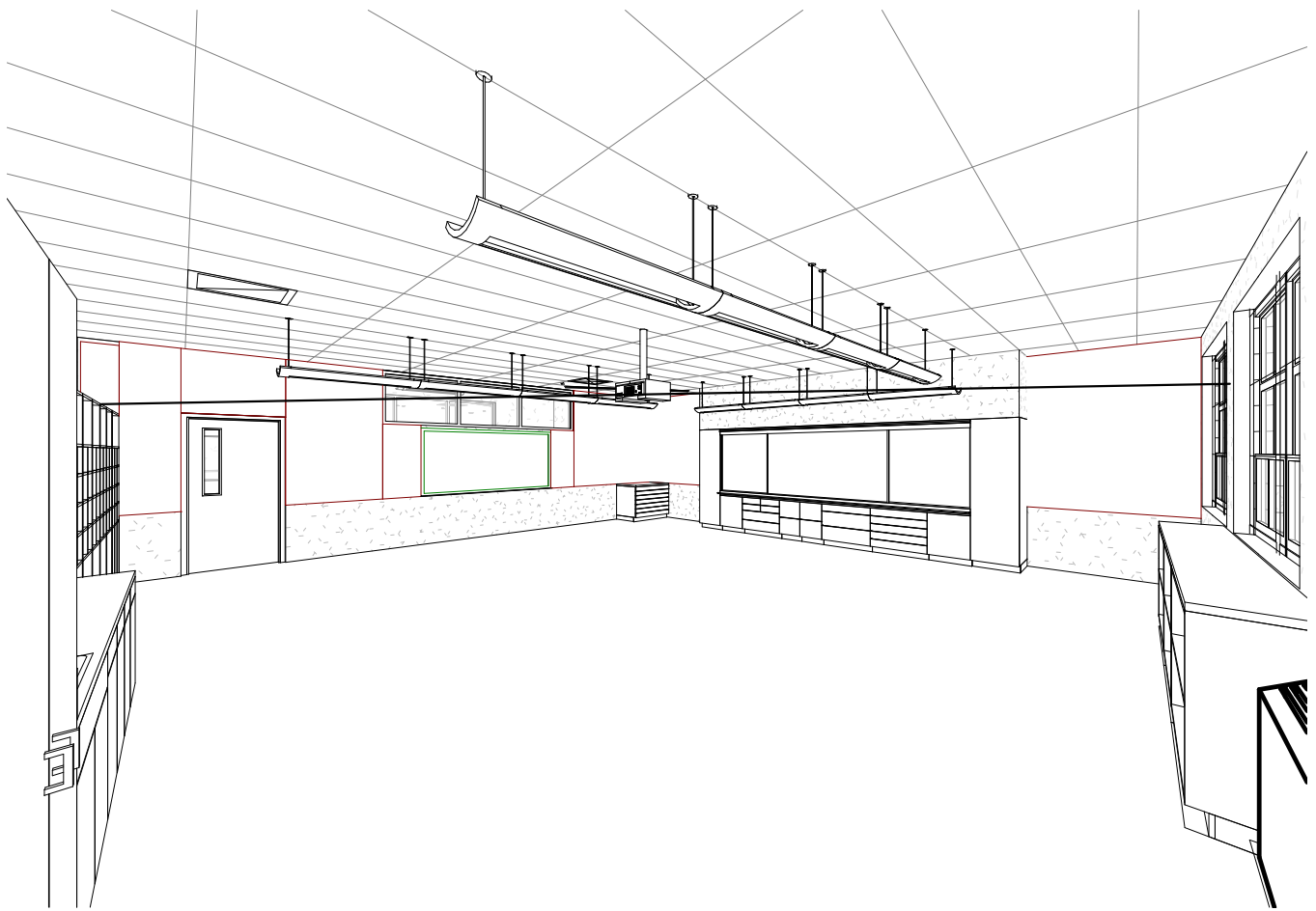
0918201

**WLC Architects, Inc.**

REVISION DATE:

07/13/11





# TYPICAL CLASSROOM PERSPECTIVE

1

SHEET NUMBER:

5.3.

PROJECT NUMBER:

0918201

**WLC Architects, Inc.**

REVISION DATE:

07/13/11

