

Richmond Ferry Terminal

Public Scoping Meeting: June 21, 2012



WATER EMERGENCY TRANSPORTATION AUTHORITY
WETA

Introduction

Scoping Meeting Goal:

Obtain public input regarding the scope of the environmental review process to ensure that WETA conducts an adequate environmental analysis.

Agenda:

- WETA –Agency Background
- Project overview
- Brief Q&A on proposed project design
- Environmental review process overview
- Receive verbal public comments
- *please submit a speaker card and be prepared to limit comments to 3 minutes*

WETA Agency Background

Public Agency authorized by California State Legislature

Water Transit Authority (WTA) – 2000

- Expansion service development
- Richmond Service was originally identified in the 2003 WTA Implementation and Operations Plan (IOP)

Water Emergency Transportation Authority (WETA) – 2008

- Emergency response coordination
- Expansion service development
- Regional service consolidation
 - Alameda/Oakland
 - Alameda Harbor Bay
 - Vallejo Baylink



Project Area



*Port of
Richmond*

*Marina Bay Yacht
Harbor*

Ford Building

Proposed Terminal Site

Existing Site Conditions



Existing surface parking lot
(Public and Ford Building tenants)

Existing float and gangway



Proposed Parking and Public Access Improvements

Future parking expansion
north of Ford Building

Relocated Ford Building tenant
parking

Future parking expansion into
Port of Richmond

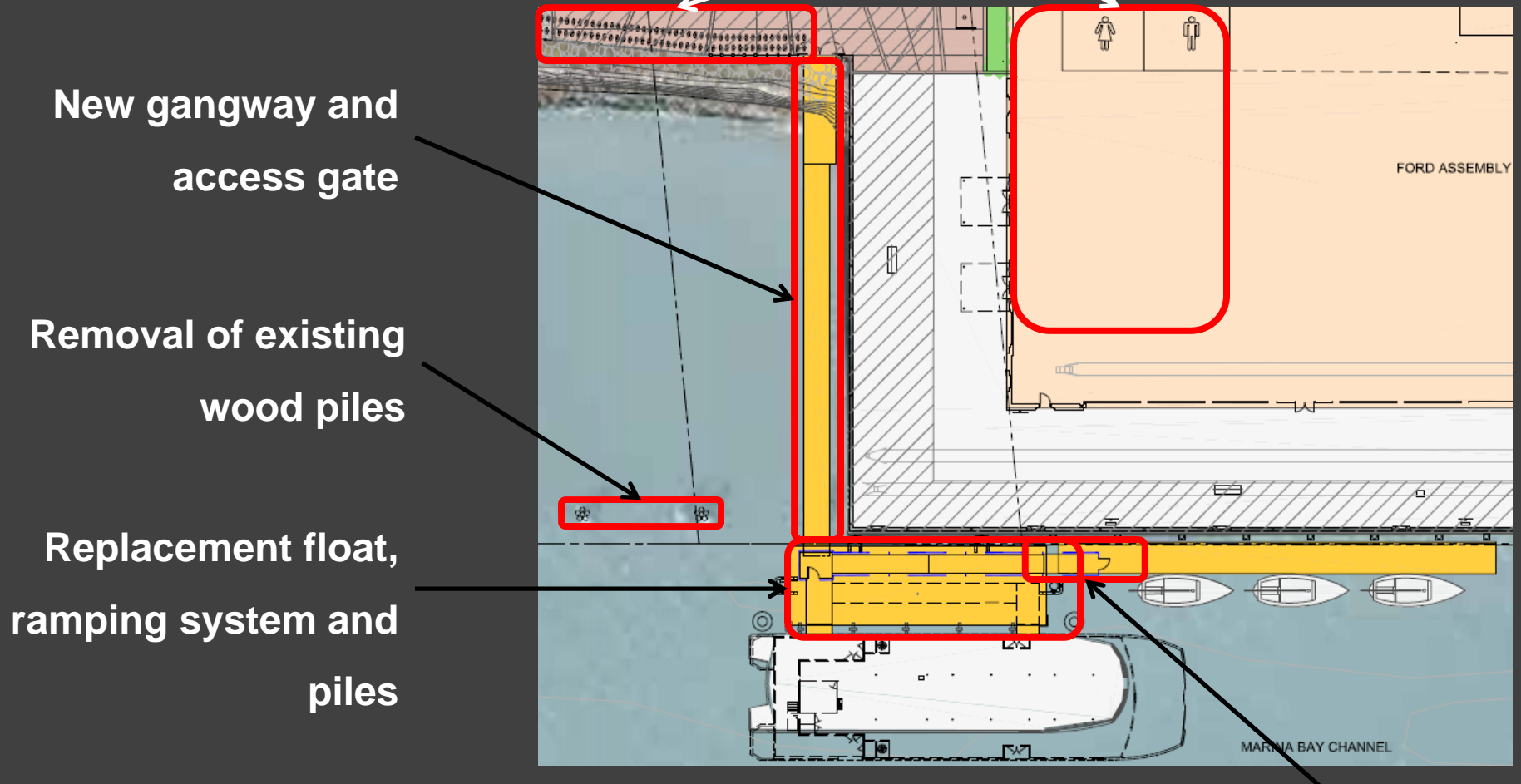
Initial ferry parking

public access and trail
improvements



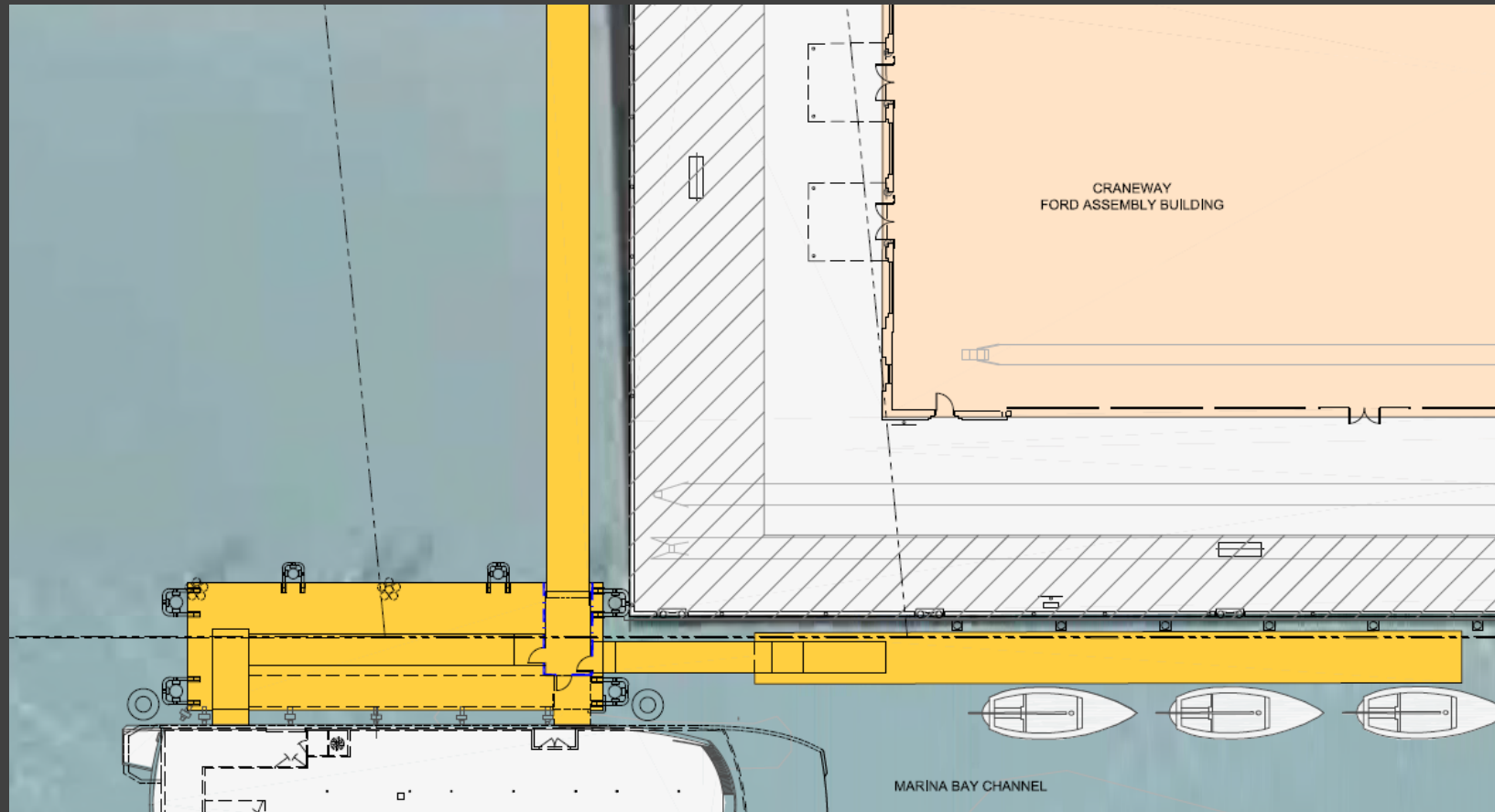
Terminal Design Option 1

Passenger waiting areas

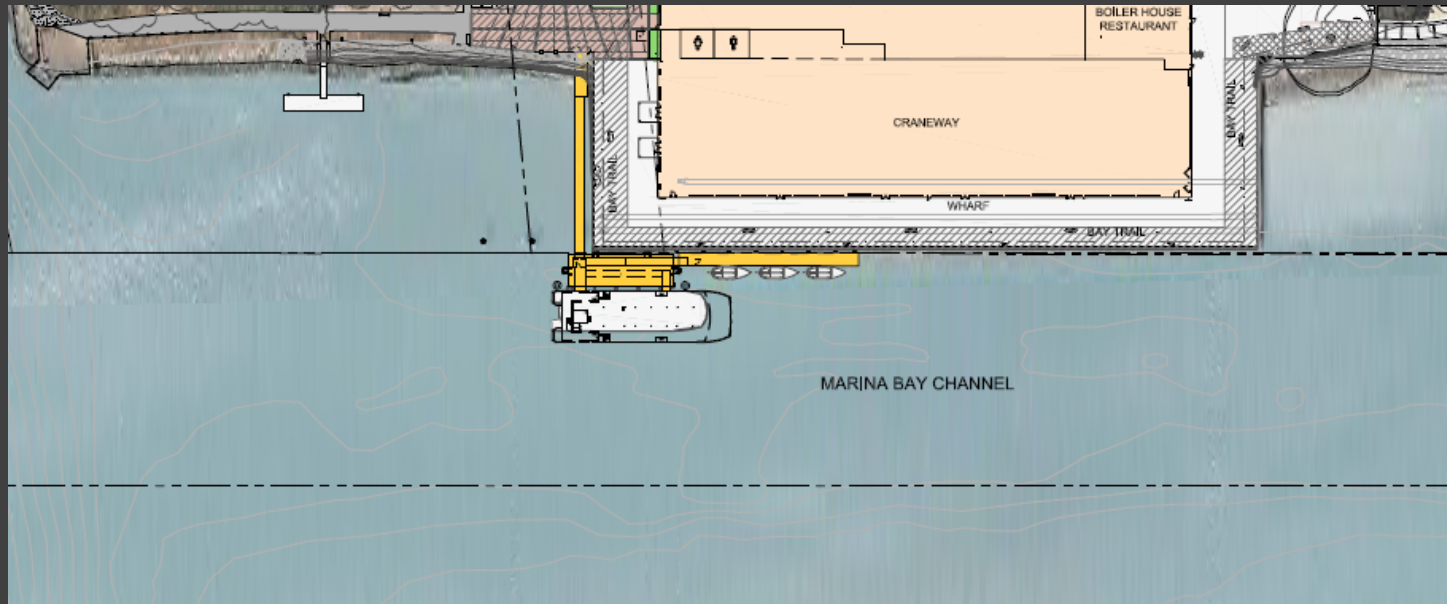


Access to previously approved docks

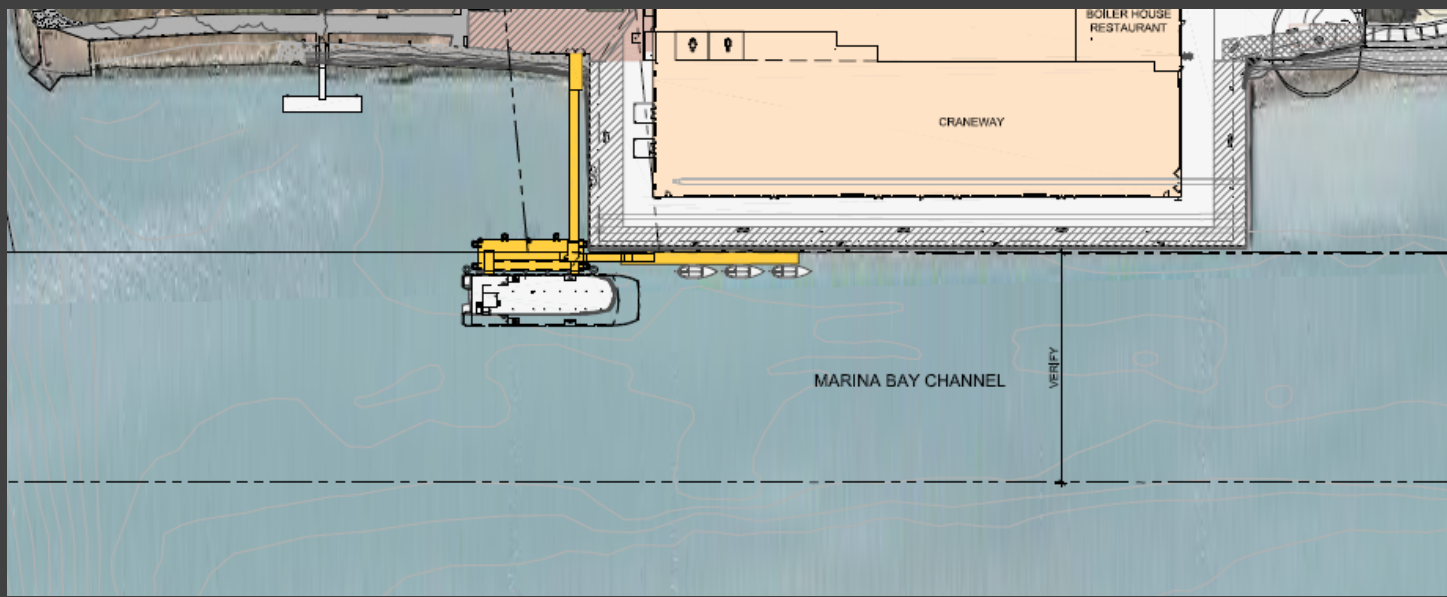
Terminal Design Option 2



Option 1

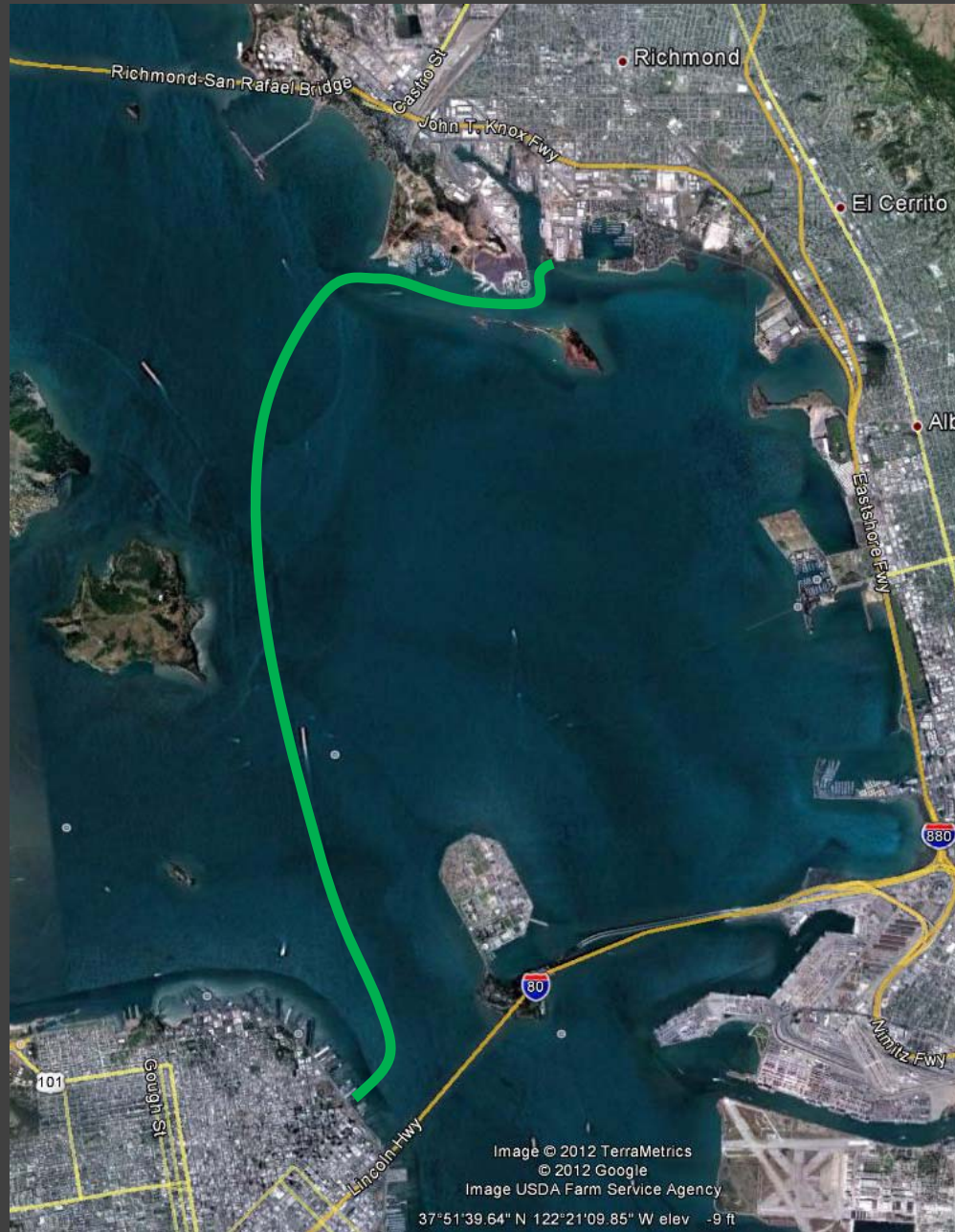


Option 2



Proposed Route – Richmond to San Francisco

Approximate Route



Service Overview

- **The service would start as a commute period only service**
 - **35 to 40 minute trip time**
 - **299 passenger vessel**
- **The level of service depends on availability of operational funds**
- **The environmental review will analyze a level of service including off-peak and weekend service**
- **2035 ridership is projected to be 1,083 to 1,715 daily passenger trips**

Environmental Review

- **WETA is the lead agency under CEQA**
 - **CEQA - Initial Study/Mitigated Negative Declaration (IS/MND)**
- **The Federal Transit Administration (FTA) is the lead agency under NEPA**
 - **NEPA – Categorical Exclusion (CE) or Environmental Assessment (EA)**
- **The environmental review will focus on the following topics:**
 - **Aesthetics and visual quality, circulation, historic resources, navigation and safety, air quality/GHG, noise, biological resources, land use and planning**
 - **Construction: air quality, noise, aquatic and biological resources**
- **Publication of the IS/MND provides additional opportunity for public comment**

Schedule

- **Environmental Review: 6 to 9 months**
- **Final design: 6 months**
- **Construction: 9 to 12 months**
- **Potential service start date in 2015**

Terminal Design and Environmental Process

Question and Answer

Public Comment

- Please fill out and submit a speaker card
- Please keep comments to 3 minutes or less
 - A court reporter is present to document all comments
- Alternatively, submit in writing today (comment card) or submit comments via mail or email by July 13, 2012
- Thank you for participating!