

East Brother Fog Horn

The official Newsletter of East Brother Light Station www.ebls.org

Volume 4, Issue 1

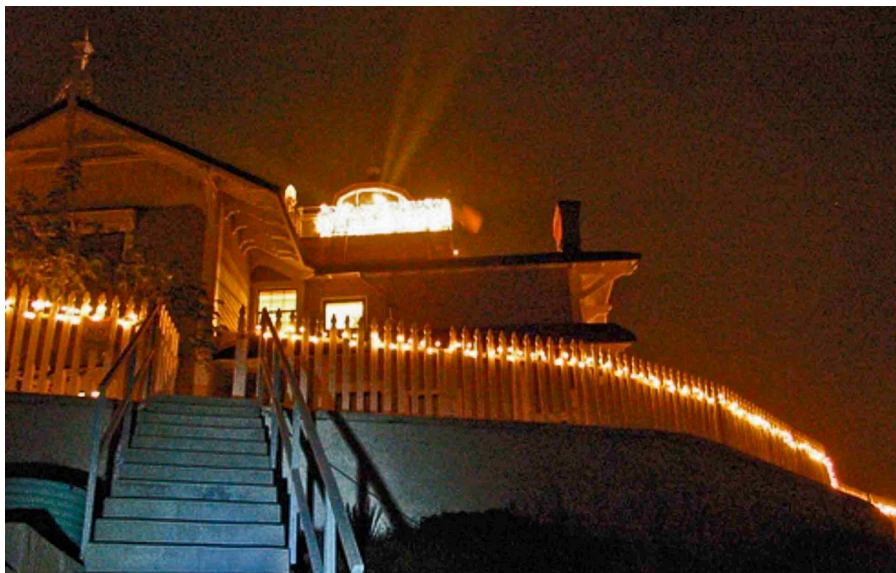
January-February 2007

At the November EBLs Board of Directors Meeting, the Fog Horn editor was directed to issue more frequent and possibly less lengthy newsletters so that information would be as current as possible. We will try but still wish for a volunteer to step forward to take this task on. To subscribe: WWW.EBLS.ORG

2006 Christmas Decorations



Board Member Emmy Gengler & Husband Jeff spent many hours decorating the Island far surpassing their 2005 decorating efforts.

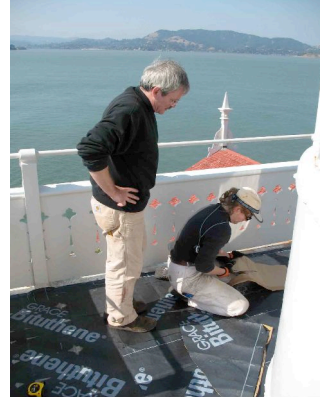


Leak Patrol

Each year as winter approaches our anxiety level increases because we know that the perennial leaks will reappear. There has been a mystery leak that affects the south side of the main house. Leaks dribble into the S.F. Room bathroom ceiling, the foyer leading into the galley, the pantry, and sometimes a new place. We have felt for some time that the original copper decking on the widow's walk around the light might be the cause. Many attempts to repair it have met with varied success, but the leaks have continued.



Original copper deck covering



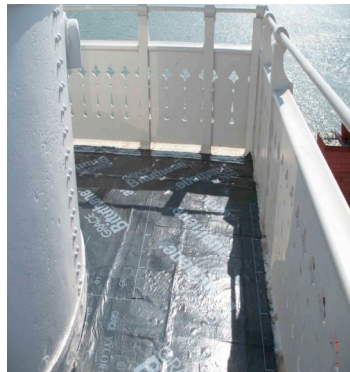
Charlie "supervising"

We had an old world master coppersmith who does historic restoration internationally, come to the Island to assess the condition of the original 134-year-old copper work that is suspect. He found that bending the lap joints and working up and down as it is tread upon had weakened the copper. The estimate for a complete replacement in keeping with the historic designation of the structure would be around \$15,000, which we do not have at this point in time.

Buildings and Grounds Chair/Board Member Charlie Duncan and Board Member Kristen Gates, assisted by Board member Pete Martin (join the Board and become a reliable maintenance work source) tackled the copper by installing a temporary self-sticking membrane product, Bituthene 4000.



Kristen



Bituthene Membrane



Bituthene 4000 by Gates

Point Molate Update

Pursuant to the terms of the Land Disposition Agreement (LDA) dated November 9, 2004, Upstream Point Molate LLC has notified the City of Richmond that it is electing to extend the Closing Date for purchase of the Point Molate property from January 15, 2007 to January 15, 2008. Pursuant to the LDA, Upstream has acknowledged its obligation to pay to the City a non-refundable \$3,000,000 extension fee on January 15, 2007, to be applied against the Purchase Price.

Note: This has to do with the proposed construction of an indian gaming facility on the site of the old Wine Haven buildings, to include a conference center, hotel. Condos, ferry terminal and more. It is of great interest to EBLs as the spin-off from such a development could have a positive affect on us.

Keeper's New Home



At the December Wickie Day Work Party, Elan & Katy announced that they have purchased a home near Tacoma, Washington.

They promise they are not moving any time soon. They will rent it until the time comes when they move into it themselves.

EBLS is proud to see our Keepers planning for their future and they have our full support!

If you want to help keep them happy, book at night on the Island and get to know these fabulous people better!

January Shutdown

Elan and Katy are taking a well-earned respite from the Island during the last two weeks in January. During that time, the Lucretia will be taken in to have the lifting eyes welded and a new 50-gallon fuel tank installed. This is the completion of repairs that were conducted last October. We also hope to upgrade our shore side electrical panels to provide additional amperage to the Island. We need to increase the capacity due to many factors, not the least of which is the need for a high speed sterilizer for the pots, pans and dishes. The current method takes over an hour per load with several loads a day. We are also going to install a desalination unit so we can utilize fresh water in our wastewater treatment system. You can read more about that under "Waster Water Update."

Freezer Fails

Not very sexy, but nonetheless of great import. One of our 18-year-old freezers failed in October spoiling \$500 worth of the Keepers frozen food. The Board reimbursed the Keepers for their loss and elected to purchase a new commercial freezer at a cost of approximately \$2,000. This was yet another in a series of expenses beyond normal operations. See Sponsorship below to see how you can help.

Waste Water Update

Board President Tom Butt was able to secure a \$20,000 grant to purchase and install a desalination unit so we can use fresh water to flush the Island toilets. Since 1873 and up until a few short years ago, all wastewater was flushed directly into the bay. EBLS was able to secure a \$100,000 California Clean Water Grant to install a waste water system (similar to a septic system) on the Island. However it can be made more efficient if we can use fresh water in the treatment system. Why have we not used fresh water up until now? The Island is not connected to a municipal water system. All of the potable water on the Island is derived from rainwater that is caught in a catchments basin that feeds into a 50,000-gallon cistern located in the middle of the island. That in combination with a 25,000 gallon water tank, is all the fresh water available for the entire summer season that can last as long as eight months without any meaningful rainfall. And that, friends, is why we cannot offer a shower unless you stay for two days or more.

Sponsorship/Wish list

This will be a regular feature in every edition of the Fog Horn, as the time has come that we need to reach out to our friends and supporters to help make ends meet. Costs are escalating and our occupancy and pricing is pretty much fixed. We have a wish list of items that an individual or company could sponsor, or we have membership levels that will also help to offset costs.

Friends of East Brother Light Station Sponsorship Drive – We need your help!

Maintaining a 134 year-old historic lighthouse on San Francisco Bay is very challenging. Since 1971, dedicated volunteers have worked tirelessly to meet that test. Our charge from the Coast Guard is to maintain the facility and make accessible to the public. We believe we have met that mandate, however, it takes money, a lot of it!

Budget Challenges

Currently, operating the lighthouse as a bed and breakfast inn generates all funds for maintenance and upkeep. EBLs has managed to stay abreast of the normal maintenance, but we have not been able to complete the all improvements and costly maintenance task that we would like to. Some of the projects on the waiting list are those aimed at making the island more accessible to all, especially to more children, families and seniors.

East Brother Light Station needs your help! We have a challenging budget that meets everyday needs but not all of the big things. How can you help?

- Become a sponsoring member.
 - Perhaps you or your company would like to sponsor one of the needs on our Wish List. It's easy, simply call 510.236.7435 and ask for Tom or go to www.ebls.org and look for "Sponsorship. All donations are tax deductible to the extent allowed by law.
- Become an overnight guest. This is having your cake and eating too, everyone wins with this!
- Become a volunteer
 - Do you have special skills such as fund raising, newsletter editing, construction, welding, Electrical, painting, boat repair, or let your imagination be your guide. bers
- Contribute to our wish list:

A desperately needed under counter commercial dishwasher/sterilizer and the electrical work needed to install it.



A new roof (see Leak Patrol above) for the main lighthouse building, or a professional roofer who can help identify and repair numerous small leaks that are threatening to damage some areas of the interior.

FUNDED! A 100-150 GPD Water maker to convert the present salt-water flush toilets and septic system to fresh water to meet w This is an extremely important need! The island has no potable water es on stored rainfall to carry it through the summer dry season. Salt wa **FUNDED!** conserve the precious fresh water

A complete upgrade of our shore side electrical power service. Licensed electrician, Contractor, or Donor required. This equipment has corroded over the years and is now at a point where it is may become unreliable or unsafe. Additionally, the present service allows for only 30 AMPS of power to run the entire island. By upgrading we can bring the service to near 100 amps that will both supply more adequate power, and do so safely.

Replacement or repair (Sheet metal expert) we have a \$15,000 bid WHICH MEANS WE EITHER NEED THE FUNDING OR A VOLUNTEER COPPERSMITH. The copper decking on the widow's walk around the light tower. This may be the original copper work that now has many small holes (say leaks) in it.

A new 24 - 30 foot fiberglass flagpole. The flag halyard pulley has failed at the top of the old flagpole! It is unsafe to rickety to repair. A Light Station cannot operate without the U.S Flag flying proudly overhead.

A New Gangway on our dock to facilitate boarding by island guests.

A Solar array to offset increasing costs and to provide "green power" independence.

A new aluminum fuel tank and repair of hoisting eyes on the Light House Launch "Lucretia."



This critical need is being funded with EBLs funds.

A historically correct replica of a third order Fresnel lens and install it in the light tower. Exact replicas of the original Fresnel lenses are manufactured in the mid-west and are available by special order. Probable cost- \$30,000

Replace a still safe but rusting dock ladder - \$2,500

Marine artifacts that would add to the historic value of the Light Station

Go to www.ebls.org and just follow the prompts or to talk to a real live lighthouse lover call Thomas Butt
 Chairman of the Board - East Brother Light Station
www.ebls.org
 510.236.7435

Sponsorship Levels

Friends of East Brother Light Station membership starts at \$25.00, additional benefits are available for the following sponsorship levels. www.ebls.org

Individual Sponsorship Levels & Benefits						
	Deckhand	Bosun	Chief	Captain	Commander	Admiral
Support level	\$100 - \$249	\$250 - \$499	\$500 - \$999	\$1,000 - \$1,499	\$1,500 - \$2,499	\$2,500+
EBLS Log from Newsletter listing name of individual, or family	+	+	+	+	+	+
Listing on email blasts to previous guests	+	+	+	+	+	+
Day Use Passes	2	4	4	6	6	8
Website Sponsorship page listing	+	+	+	+	+	+
T-shirts* a number of t-shirts unless <small>Or other custom clothing they are a sponsor of EBLs</small> they are a sponsor of EBLs	1	1	2	2	4	4
Invitation to attend EBLs two day event	2	2	2	4	4	4
Seal* replica of EBLs	small	small	small	large	large	large
Room discounts			10%	25%	Free night for 1 night	Two Night stays

To view this chart at full size, please go to WWW.EBLS.ORG There are rewards for becoming a sponsor!