

An invitation to: View the View Points

After approximately eight years of work (with the concept originated by Lucretia Edwards in 1973) we invite you to help celebrate the official opening of Richmond's four new Pedestrian View Point Overlooks!

These mini-parks are truly a collaborative effort of local volunteers, professional engineers and architects, elected officials, City staff, the Point Richmond Neighborhood Council, BCDC, Coastal Conservancy and those committed to shoreline access. These view and access points have been recovered from weeds, brush, and fences and are now available for all to enjoy Richmond's fantastic neighborhood shoreline.

To show appreciation to the many benefactors that have been part of this effort and to introduce the parks, we're having a public opening on April 8, 2006 beginning at 10:00 AM to noon. A self-guided tour starts at the Santa Fe site and continues on to Western Drive, then Clarence and finally the Marine Street View Point.

Light refreshments will be served at the Santa Fe and Western Drive locations

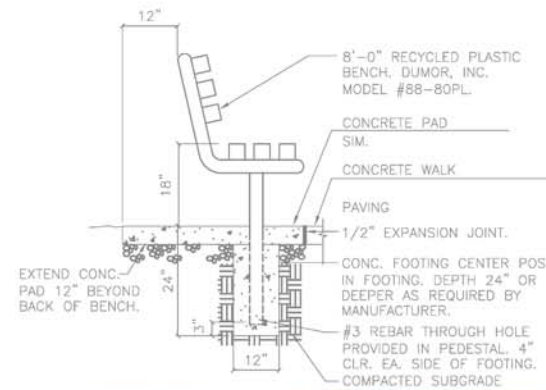
Partners:



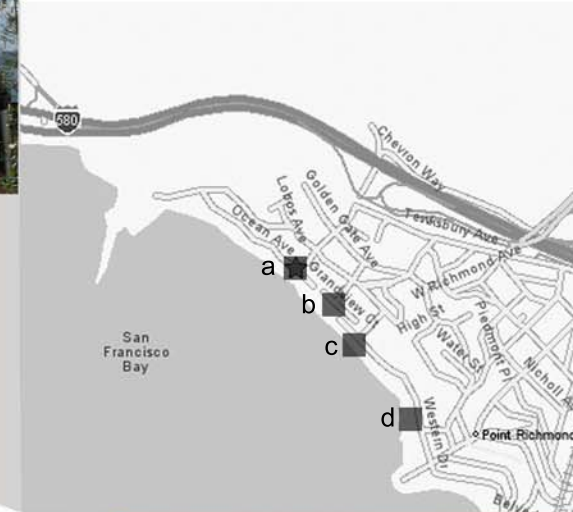
c. Western Drive



VICINITY MAP



LOCATION MAP



d. Santa Fe



b. Clarence



a. Marine Street